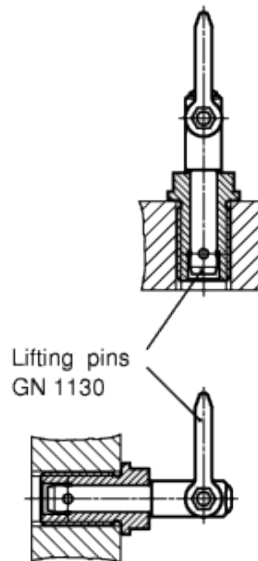
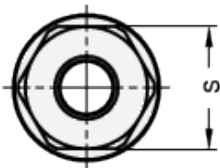
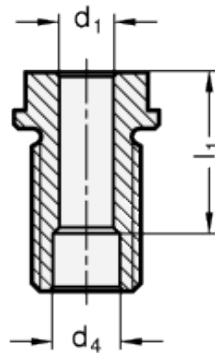
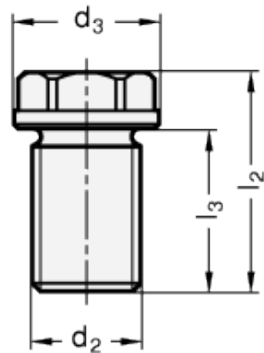


GN 1132

Holding bushes



INOX
Stainless Steel



technical informations

Bush

AISI 630 Stainless Steel, precipitation hardened.

Standard version available

Type A: with external hexagon.

Special executions on request

other lengths (l_1 , l_2 , l_3) and other threads (d_3)

Features and applications

Holding bushes GN 1132 are used in connection with lifting pins GN 1130. The length l_1 of the holding bush should be equal to length l_1 of the lifting pin in order to reach the load specification given in the table for GN 1130 at plug-in length x. Holding bushes are intended to remain permanently at workpiece, creating a place-saving alternative to load rings or similar.

Standard Elements	Main dimensions								Tightening torque in Nm	Weight
Description	d_1	l_1	d_2	d_3	$d_{4+0.3}$	l_2	l_3	s		g
GN 1132-8-10-M16x1.5-A	8	10	M16x1.5	24	9.8	27.5	20	19	90	32
GN 1132-8-25-M16-A	8	25	M16	24	9.8	37.5	25	19	75	47
GN 1132-10-15-M20x1.5-A	10	15	M20x1.5	28	12.2	35.5	24	24	145	70
GN 1132-10-35-M20-A	10	35	M20	28	12.2	46	29	24	130	92
GN 1132-12-15-M24x1.5-A	12	15	M24x1.5	32	14.7	35.5	24	27	220	99
GN 1132-12-35-M24-A	12	35	M24	32	14.7	48.5	36	27	200	119
GN 1132-16-25-M30x2-A	16	25	M30x2	39	19.2	44	29	30	440	164
GN 1132-15-50-M30-A	16	50	M30	39	19.2	66	44	30	400	236



STANDARD MACHINE ELEMENTS WORLDWIDE